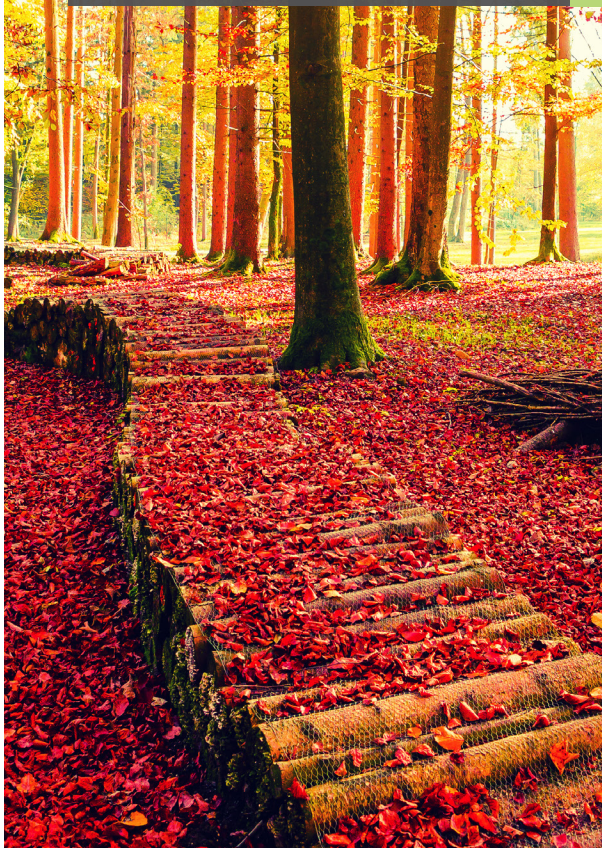




Palliative care is specialized medical care aimed at improving the quality of life of patients and their families facing serious illness.



For more information contact:

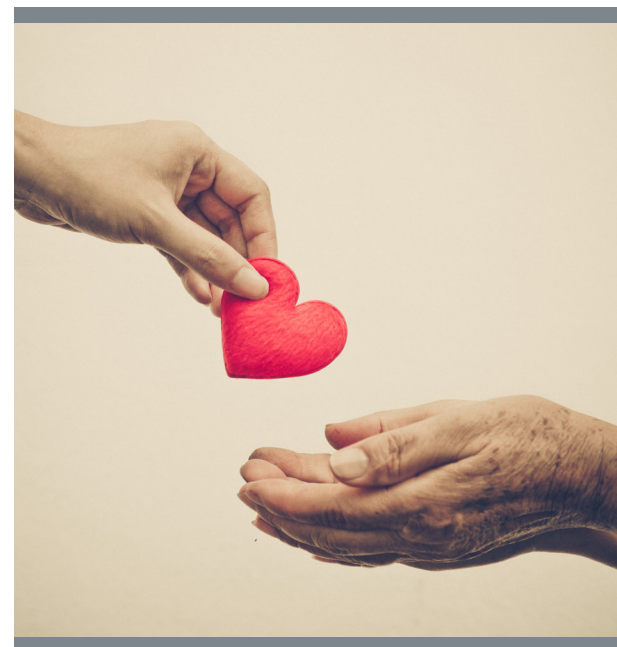
St. Peter's Health Palliative Care Team
2475 Broadway
Helena, MT 59601
406-444-2137

stpetes.org/palliative-care



St. Peter's
Health

PALLIATIVE CARE SERVICES



St. Peter's
Health

Palliative care helps you and your family carry on your daily life and improves your ability to go through medical treatments.

Palliative care is provided by a team of specialized professionals who will work with your providers to provide an additional layer of support for both you and your family. Care is provided inpatient or outpatient with a referral to palliative care as needed.

Palliative care can help you and your loved ones better understand your illness and your choices for your medical care. Care can be provided in conjunction with curative or life prolonging treatment.

OUR MISSION IS TO:

- Enhance quality of life
- Provide relief from pain & other distressing symptoms
- Affirm life and regard dying as a normal process
- Integrate psychological and spiritual aspects of care
- Offer a support system to help families and patients through the course of an illness
- Positively influence the course of illness
- Advocate for the patient and family's wishes and needs

“In an emergency, what treatment is given by ear? Words of comfort.”

—Abraham Verghese, MD

WHAT WE DO

Our palliative care team can help by:

- Providing support and counseling during the changes that a serious illness can bring to your life
- Reducing or controlling pain and debilitating symptoms
- Coordinating family meetings to assist with medical decisions
- Collaborating with your physician to ensure best possible treatment

PALLIATIVE CARE CONSULTATION

Talk to your physician or nurse about a referral to palliative care.

You can call us at 406-444-2137 to arrange a consultation to discuss how we can meet your needs.

PALLIATIVE CARE TEAM

Your palliative care team is comprised of:

Advance practice providers who specialize in pain and symptom management.

A **clinical social worker**, skilled in complex care planning, coordination of resources, and emotional support to patients and their families.

A **chaplain** skilled in providing spiritual support with patients and families from all spiritual and religious backgrounds.

Your Palliative Care Team



Jessica Bailey, MD
Medical Director



Cynde Watkins, FNP
Family Nurse Practitioner



Mark Kishbaugh, PA-C
Physician Assistant



Crystal Ross, LCSW
Licensed Clinical Social Worker



Kimberly Pepper, BCC
Board Certified Chaplain

FOR MORE INFORMATION: 406-444-2137

sphealth.org